



OFFICE:

Gedung Plaza Simatupang Lt. 6
Jl. TB Simatupang Raya Kav. IS No.01 Pondok Pinang, Jakarta Selatan 12310
Phone: 021 22702295
Website: www.xolare.co.id

COMPANY PROFILE

I. PROFILE



PROFILE

- PT. Xolare RCR Energy [Xolare] (formerly PT. RCR Energy Indonesia) was established in 2014 as a Foreign Investment Company (PMA) and has changed to become a Domestic Investment Company (PMDN) in 2019.
- Xolare is a business group engaged in Bitumen trading, Bitumen processing industry and Construction Services.
- Has wholly owned 4 subsidiaries company in bitumen modification industry, 1 subsidiary in road construction, and 1 subsidiary in Solar Power Construction



Jakarta – Indonesia



corsec@xolare.co.id



www.xolare.co.id



VISION

To become a competitive group and environmentally friendly of companies through the bitumen and construction business for a better future.



MISSION

- Prioritizing a sustainable growth, quality and environmental.
- Prioritizing quality, safety and service reliability for the customer and partner satisfaction.
- Creating the opportunities and added value for stakeholders through innovation and technology.
- Building qualified and ethical human resources, creative and growing together

OUR JOURNEY TILL NOW

PROFILE

We started commercial operations with business activities as an EPC Company for Power Plant, Boilers & HRSG designed and manufactured by RCR Group.

2014

Established PT. RCR Energy Indonesia as a **Foreign Investment Company (PMA)**, as a subsidiary of RCR Energy Pty. Ltd. Australia

2016

2019

We **became a National Investment Company (PMDN)**, after a shareholder restructuring.

2020

We become an EPC in the mechanical and electrical fields and in 2020 RCR Energy Indonesia also **started a business in the asphalt trading sector.**

2022

Changed our name to PT. **Xolare RCR Energy (XOLARE)**, after the company's restructuring in & started a renewable energy construction services, especially solar power plants.

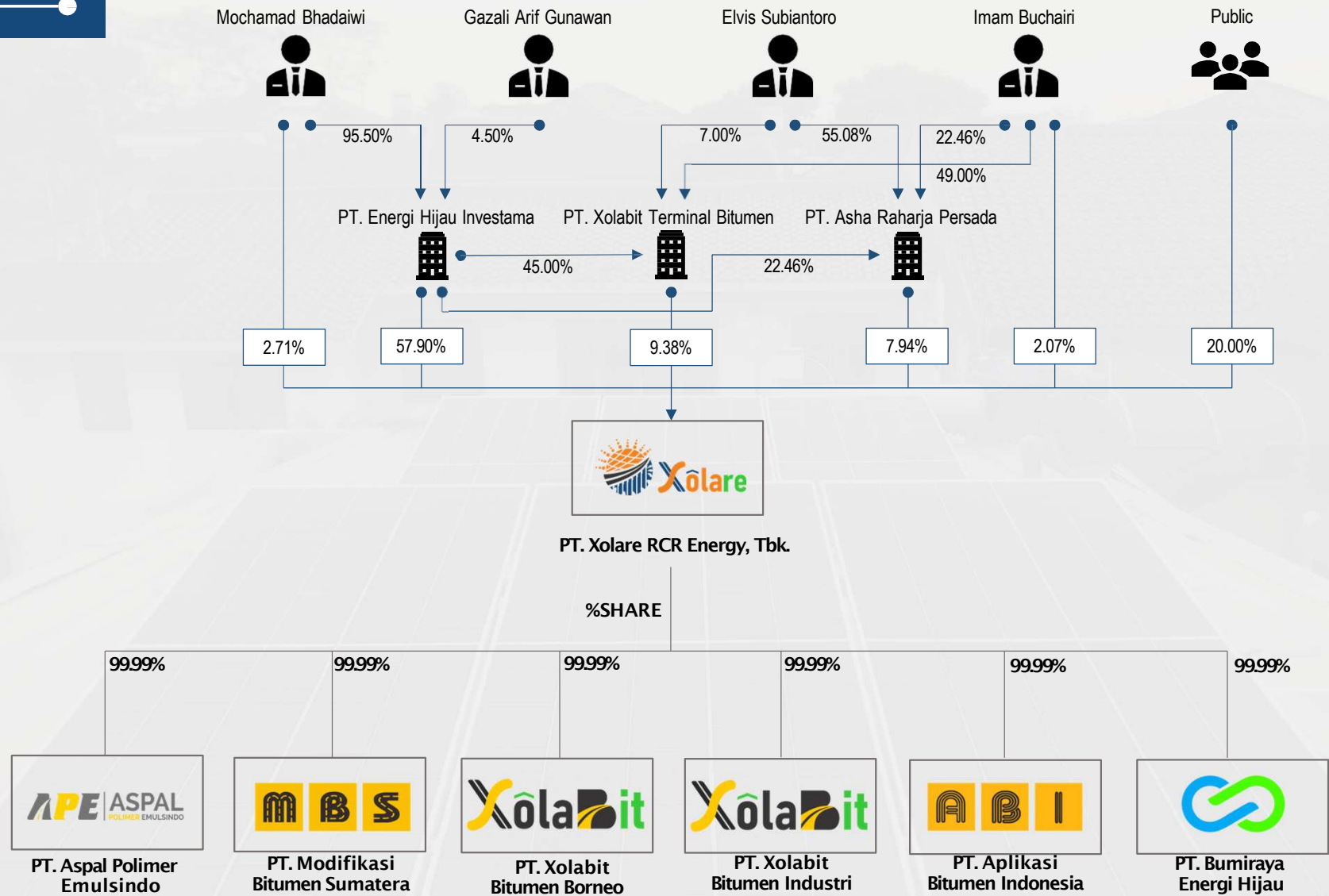
2024

Listed in Indonesia Stock Market
May 2024 - [IDX ; SOLA]

II. STRUCTURE & MANAGEMENT



STRUCTURE



Board of Commisioner



DR. WINARDI SANI
President Commisioner



ACHMAD ALWI SH.
Commisioner



RAMDANI EKA SAPUTRA. MM. MH
Independent Commisioner



MOCHAMAD BHADAIWI
President Director



ELVIS SUBIANTORO
Marketing Director



HASNAN RISWANDI
Finance Director



IMAM BUCHAIRI
Operation Director

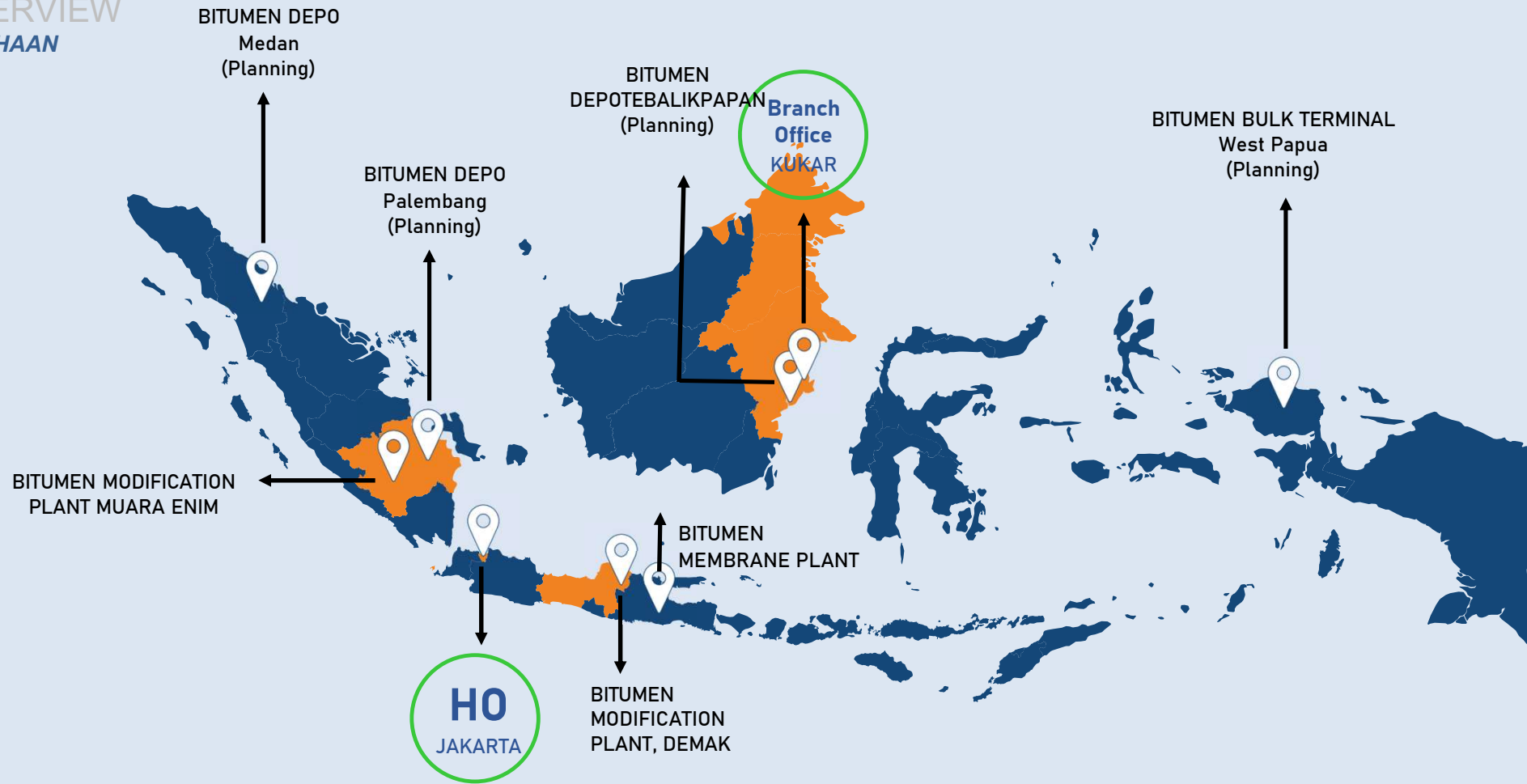
Board of Director

WHAT DO WE DO ?

We provide products & services **related to asphalt products & construction services** to support the requirement of infrastructure in Indonesia.



COMPANY OVERVIEW
GAMBARAN PERUSAHAAN



KEY BUSINESS STATISTICS Y23-24 & 2025 (M5)



Revenue

IDR 83.2b (Y23)
IDR 119.1b (Y24)
IDR 67.2b (May25)



Net Income

IDR 6b (Y23)
IDR 6.7b (Y24)
IDR 10.7b (May25)



Operating Income

IDR 21.6b (Y23)
IDR 23.3b
IDR 18.3b (May25)



EBITDA

IDR 9.5b (Y23)
IDR 12.1b (Y24)
IDR 10.7b (May25)



Revenue Growth

15% (Pre IPO)
>Ave.30% (Post IPO)



Contracts

100+



Products

20+



Customers

100+



Offices & Factory

05



Laboratory

Integrated



Technology

Integrated



Employees

75+

PT XOLARE RCR ENERGY TBK

Financial Projection 2025-2028

In Million Indonesia Rupiah



DEVELOPMENT PLAN

Bitumen

Bitumen Depo At East Kalimantan

Bitumen Depo at North Sumatera

Bitumen Depo At South Sulawesi

Bitumen Depo At West Papua.

Construction

Construction of Chipseal Project 3rd phase 60 km

110 km Hauling Road Maintenance Contract 10 year .

Asphalt Mixing & Batching Plant at South Sumatera

Asphalt Mixing & Batching Plant at East Kalimantan

Chipseal & Soil Stabilization Project

Renewable Energy

PLN Project - IPP

Performance Base Contract (Industry sector)

Mini Hydro 2x5 MW - Lampung

Industry

Bitumen Modification Plant – East Kalimantan

Bitumen Modification Plant – North Sumatera

Bitumen Modification Plant – South Sulawesi.

Bitumen Modification Plant – West Papua

Share Price

PT Xolare RCR Energyt, Tbk
IDX : SOLA

	[3M]	12M	12M	12M
Quarter	2025	2024	2023	2022
Last Price	155	50	148	148
Share Out.	3.3 B	3.3 B	3.3 B	3.3 B
Market Cap.	509.1 B	164.1 B	485.6 B	485.6 B
Balance Sheet				
Cash	19.9 B	25.3 B	9.2 B	26.4 B
Total Asset	184.7 B	184.5 B	107.5 B	93.6 B
Short Term Debt	29.5 B	29.9 B	29.2 B	22.4 B
Long Term Debt	5.3 B	4.8 B	2.6 B	1.5 B
Total Equity	149.9 B	149.8 B	75.7 B	69.8 B
Income Statement				
Revenue	14.9 B	119.1 B	83.2 B	90.8 B
Gross Profit	5.8 B	38.2 B	27.3 B	44.1 B
Operating Profit	863.7 M	9.1 B	7.2 B	26.6 B
Net. Profit	113.4 M	6.7 B	6.0 B	24.6 B
EBITDA	2.2 B	12.1 B	9.5 B	26.8 B
Interest Expense	0	0	0	0
Ratio				
EPS	0.03	2.03	1.81	7.5
PER	5166.67x	24.63x	81.77x	19.73x
BVPS	45.64	45.65	23.07	21.26
PBV	3.40x	1.10x	6.41x	6.96x
ROA	0.06%	3.63%	5.55%	26.27%
ROE	0.08%	4.47%	7.88%	35.27%
EV/EBITDA	242.33	14.39	53.68	18.05
Debt/Equity	0.23	0.23	0.42	0.34
Debt/TotalCap	0.19	0.19	0.3	0.26
Debt/EBITDA	16.1	2.88	3.36	0.89
EBITDA/IntExps	0	0	0	0



Subsidiary Company

APE



Jalan Raya Demak - Kudus KM 2.2 Kampung Sekaran RT01/RW01 Desa Mranak, Kec. Wonosalam Kab. Demak, Prov. Jawa Tengah 59571 - INDONESIA



aspalpolimeremulsindo@gmail.com



ape-bitumen.co.id

MBS



Jl. Lintas Sumatera Muara Enim - Prabumulih No. 08, Rt02, Dusun VI Desa Dalam, Kec. Belimbing Kab. Muara Enim, Prov. Sumsel 31352-INDONESIA



modifikasibs@gmail.com



modifikasibitumen.co.id

ABI



Jalan Raya Demak - Kudus KM 2.2 Kampung Sekaran RT01/RW01 Desa Mranak, Kec. Wonosalam Kab. Demak, Prov. Jawa Tengah 59571 - INDONESIA



ptaplikasibitumeni@gmail.com



aplikasibitumen.co.id

XBB



KM. 29 Jalan Soekarno Hatta, Kel Karya Merdeka, Kec. Samboja, Kab Kutai Kartanegara, Provinsi Kalimantan Timur 75271 - INDONESIA



borneo.xolabit@gmail.com



xolabit.co.id

XBI



Gedung Plaza Simatupang Lt. 6, Jl. TB Simatupang Raya Kav. IS, No. 01 RT02/RW17 Pd. Pinang, Kec. Kby. Lama, Jakarta Selatan 12310-INDONESIA



industri.xolabit@gmail.com



xolabit.co.id

BEH



Gedung Plaza Simatupang Lt. 6, Jl. TB Simatupang Raya Kav. IS, No. 01 RT02/RW17 Pd. Pinang, Kec. Kby. Lama, Jakarta Selatan 12310-INDONESIA



bumirayaenergihiiau@gmail.com



xolare.id

THANK YOU



PT XOLARE RCR ENERGY TBK

Gedung Plaza Simatupang Lt.6
Jl. TB Simatupang Kav. IS No. 01 Pondok Pinang, Kebayoran Lama,
Jakarta Selatan, DKI Jakarta
12310 - INDONESIA



Plaza Simatupang 6th Floor
Jl. TB Simatupang; Kav. IS No. 01
Pondok Pinang, Kebayoran Lama,
Jakarta - INDONESIA



+6281314413317



corsec@xolare.co.id

